

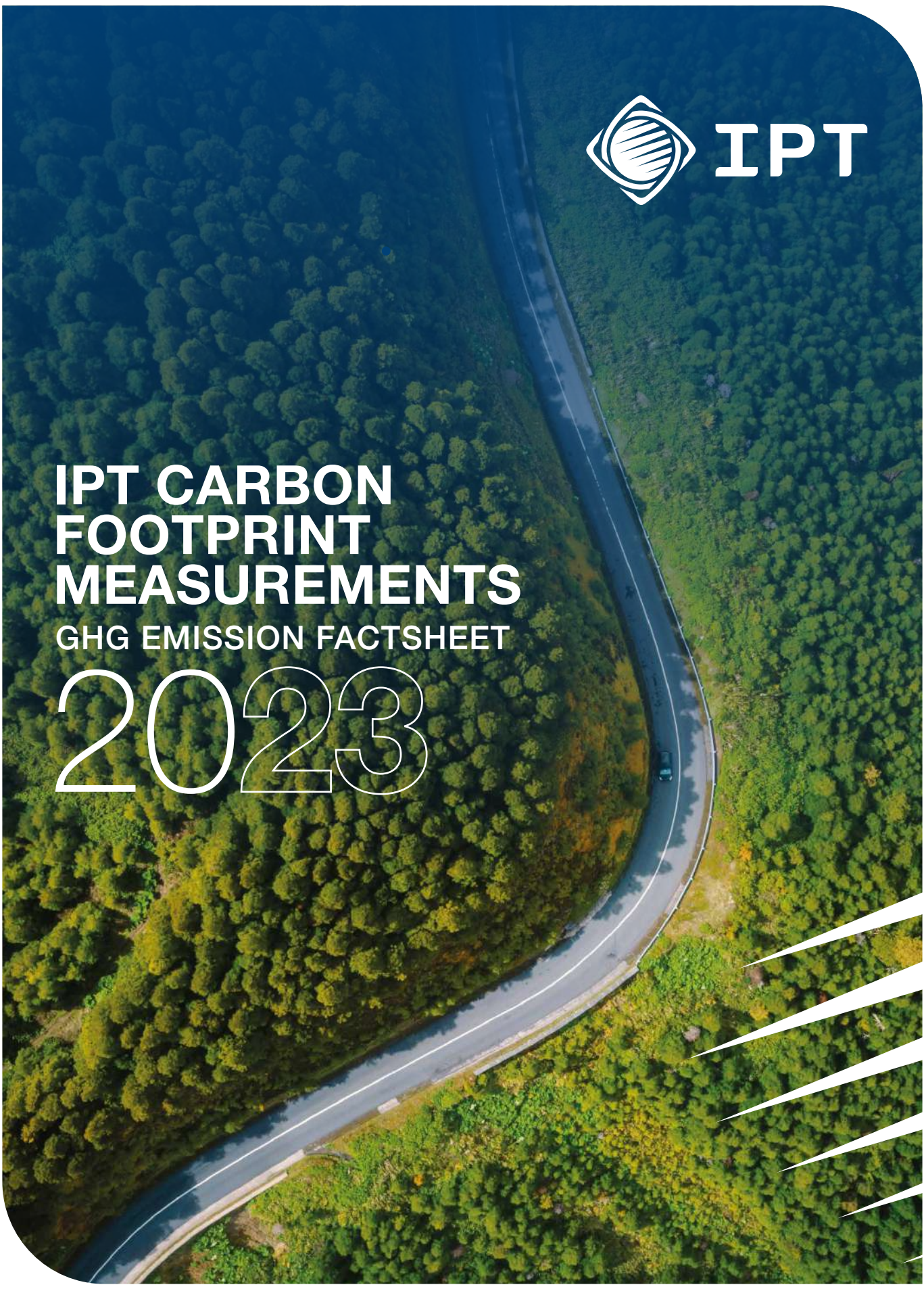


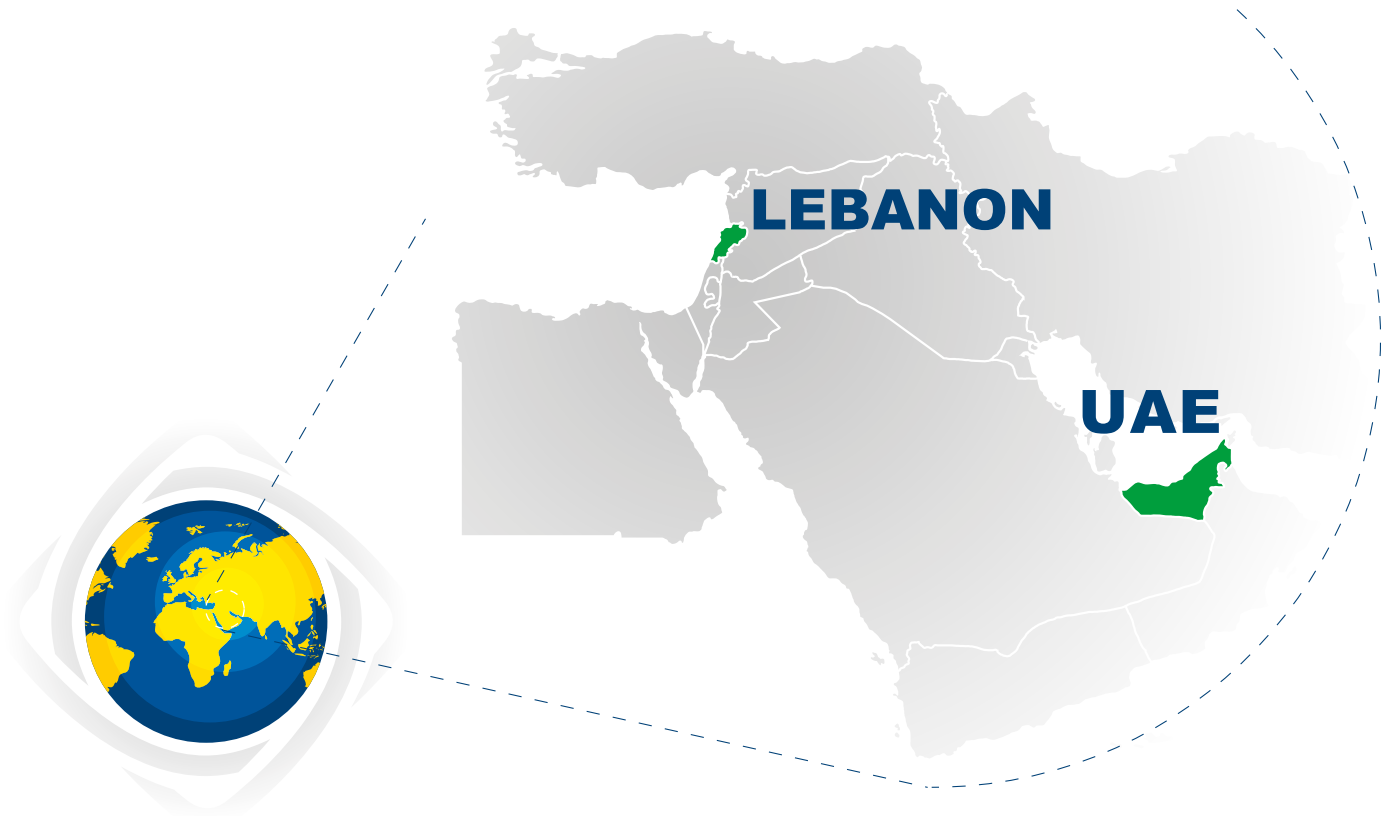
IPT

**IPT CARBON
FOOTPRINT
MEASUREMENTS**

GHG EMISSION FACTSHEET

2023





Over the past 50 years, IPT Group has worked closely with community partners and industry leaders in Lebanon and abroad, gaining extensive expertise in energy services and distribution and becoming one of the leading energy companies with a network of over 240 service stations nationwide. With a strong presence in Lebanon, IPT also services hundreds leading corporate clients and factories, as well as homes on a daily basis. Today, IPT is a success story that brings to the forefront more than five decades of experience in the energy sector. IPT expanded its operations to UAE which is specialized in diesel and biodiesel distribution, bunkering, lubricants and fuel-oil supply services. Operations are based out of a storage facility in Sharjah. IPT manages its own storage facility and fleet to supply and distribute energy to leading corporate clients across the Emirates. IPT is an authorized distributor of Total Energies Lubricants in the UAE. Given the pressing nature of climate change and its significant effects on our environment and IPT CARBON FOOTPRINT MEASUREMENTS GHG EMISSION FACT SHEET FOR 2023 IPT GROUP - LEBANON and UAE LEBANON UAE communities, IPT is leading the way in sustainability initiatives. Our dedication to environmental responsibility goes beyond simple recognition. It is deeply rooted in IPT fundamental principles and operating approach. By carefully quantifying and actively reducing greenhouse gas emissions, we are determined in our commitment to achieving a more sustainable and sustainable future. Our primary goal is to reduce our impact on the environment by promoting innovation and collaboration. We are committed to reducing our environmental footprint to benefit both current and future generations. At IPT, we see environmental stewardship as more than just a responsibility; it is our firm dedication to implementing sustainable business strategies and actively involving stakeholders and communities IPT Group engaged with V4 Advisors to calculate and report the GHG emissions emitted from its facilities in UAE and Lebanon. V4 Advisors used its GHG Protocol Mark certified tool/platform to audit IPT Group emissions.

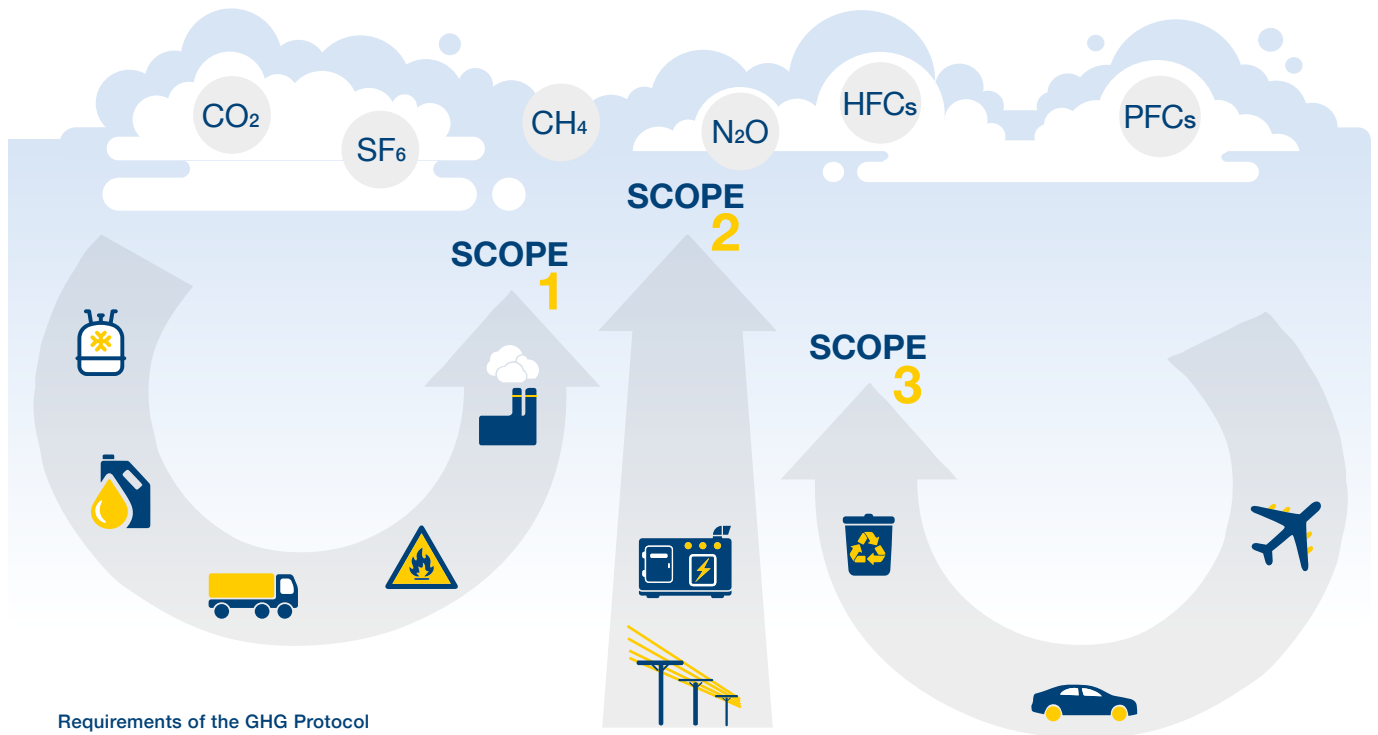




CONCEPT OF THE GHG CALCULATION

GREENHOUSE GAS PROTOCOL

A GHG audit measures the impact of the organization’s operation emissions on the environment. The carbon footprint generally begins with identifying the emission sources from the day-to-day operations. An inventory follows, accounting for the GHG emissions - most often in kilograms or metric tons of CO₂ equivalent (kgCO₂e or mtCO₂e).



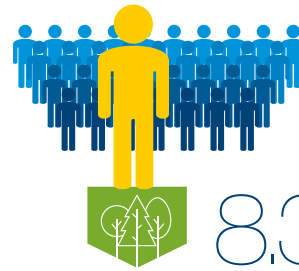
SCOPE 1	DIRECT EMISSIONS	REFRIGERANT GASES
		LUBRICANT OIL
		FLEET VEHICLES
		GASES
		STATIONARY COMBUSTION
SCOPE 2	INDIRECT EMISSIONS	POWER PURCHASED FROM THE LOCAL UTILITIES
		SHARED GENERATORS
SCOPE 3	OTHER INDIRECT EMISSIONS	PAPER CONSUMPTION
		FLIGHTS
		EMPLOYEES' CARS



FIGURES SUMMARIZING THE RESULTS OF IPT TOTAL GHG EMISSIONS (mtCO_{2e}) FOR 2023

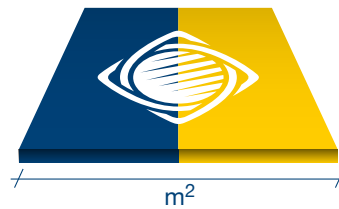
In 2023, IPT Group GHG audit report combined data from 12 months, from the 1st of January 2023 till the 31st of December 2023. This report accounts for the GHG emissions from all facilities in Lebanon and UAE required to maintain our services and operations. The total GHG emissions from IPT Group, employing 506 employees in **41,705.0 m²**, was **4,213.7 mtCO_{2e}**. The total GHG emissions were equivalent to **8.3 mtCO_{2e}/employee** and **101.0 mtCO_{2e}/m²**.

During 2023, Scope 1 was the main contributor to the total GHG emissions, accounting for **80.7%**, while Scope 2 and Scope 3 accounted for **6.1%** and **13.3%** of the total GHG emissions, respectively.



2023

8,3 mtCO_{2e}/employee

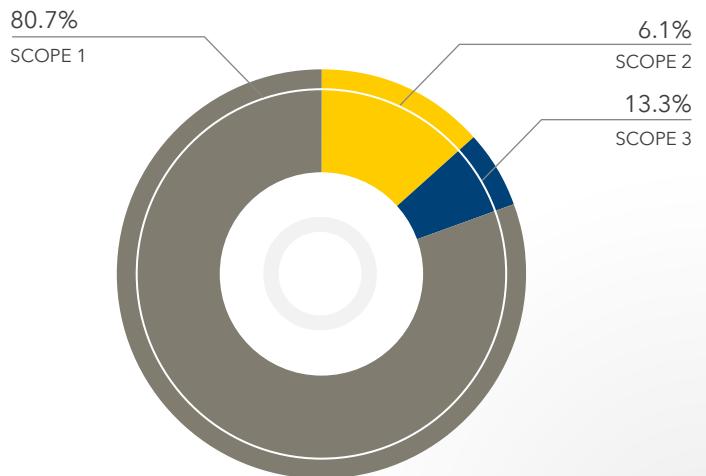


101,0 mtCO_{2e}/m²



Scope 1 was the main contributor to the total GHG emissions, accounting for **80.7%**, while Scope 2 and Scope 3 accounted for **6.1%** and **13.3%** of the total GHG emissions, respectively.

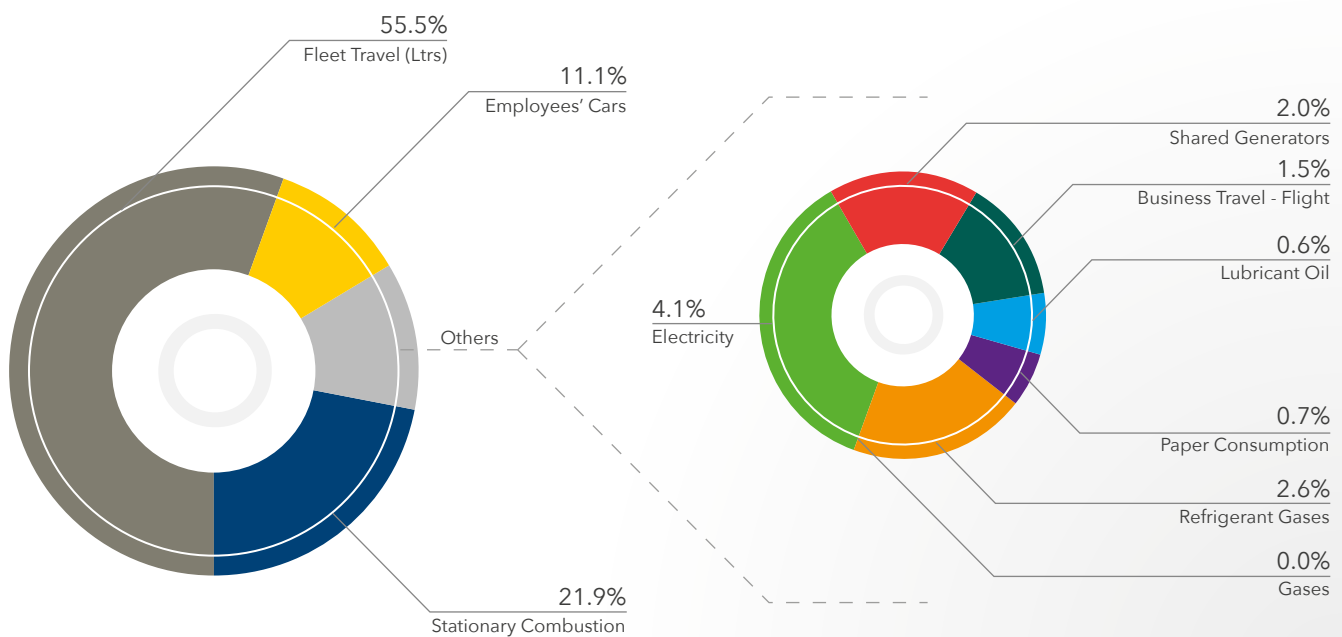
SCOPE CONTRIBUTIONS



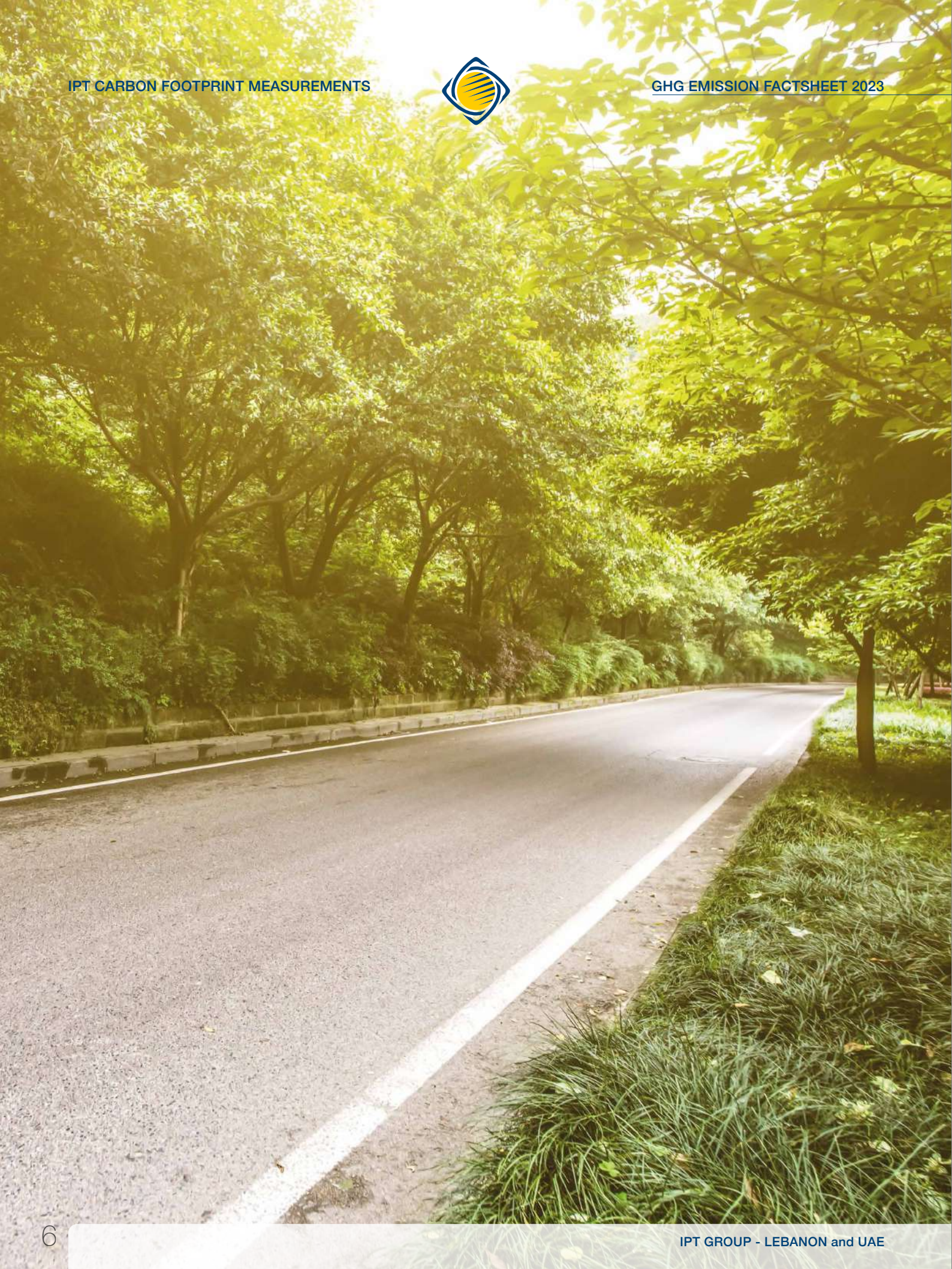


Fleet travel and stationary combustion were the main contributors with **55.5%** and **21.9%** of the total GHG emissions, respectively. Employees' cars, electricity, and shared generators accounted for **11.1%**, **4.1%**, and **2.0%**, respectively, while all other sources accounted for only **5.4%** of the total emitted GHG emissions.

SOURCE CONTRIBUTIONS



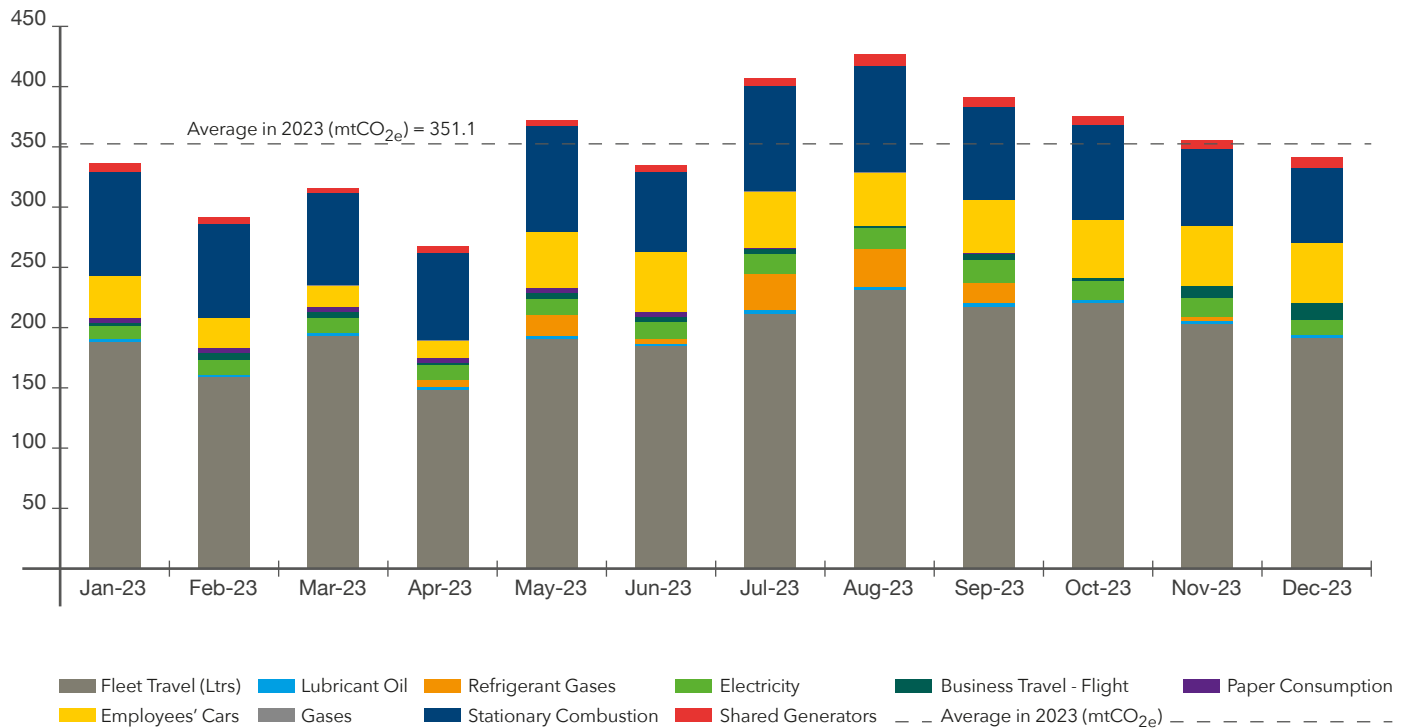
Total GHG emissions by Scope Contributions and Source Contributions





MONTHLY VARIATION OF GHG EMISSION OF IPT GROUP PER SOURCE

The monthly GHG emissions in 2023 were subject to fluctuations due to changes in operational demands and environmental conditions. IPT Group had an average monthly GHG emissions of **351.1** mtCO_{2e} in 2023, with the lowest amount of **267.0** mtCO_{2e} occurring in April and the highest amount of **526.8** mtCO_{2e} occurring in August. The monthly variation of GHG emissions per source in 2023 is illustrated in Figure below. Fleet travel was the main source of GHG emissions over the year with a maximum contribution in August with **231.0** mtCO_{2e} and a minimum contribution in April with **148.5** mtCO_{2e}.





Description	Jan-23	Feb-23	Mar-23	Apr-23	May-23	Jun-23	Jul-23	Aug-23	Sep-23	Oct-23	Nov-23	Dec-23	TOTAL
SCOPE 1. Direct emissions from backup power production and car fleet (mtCO_{2e})													
Fleet Travel (Ltrs)	187.9	159.0	193.1	148.5	190.8	184.6	211.4	231.0	217.3	220.4	202.5	191.2	2,337.7
Gases	0.1	0.0	0.2	0.1	0.0	0.0	0.1	0.1	0.1	0.0	0.0		0.6
Lubricant Oil	2.4	1.8	2.4	1.7	2.3	2.1	3.0	2.6	2.9	2.2	2.5	2.2	28.1
Refrigerant Gases				6.5	16.7	3.9	29.7	31.0	16.7		3.9		108.4
Stationary Combustion	86.1	78.1	76.2	72.7	88.0	66.7	87.1	88.1	77.0	79.1	63.6	61.5	924.2
Total Scope 1	276.5	238.8	271.9	229.4	297.8	257.2	331.3	352.7	314.0	301.7	272.6	254.9	3,398.9
SCOPE 2. Indirect emission from purchased power (mtCO_{2e})													
Electricity	10.7	12.0	12.1	11.6	13.2	13.8	17.1	17.9	18.5	16.1	15.6	13.3	171.9
Shared Generators	7.4	5.9	4.9	5.2	4.5	5.4	6.9	10.1	8.2	8.0	8.1	9.9	84.4
Total Scope 2	18.2	17.9	17.0	16.9	17.7	19.2	24.0	28.0	26.6	24.1	23.6	23.2	256.4
SCOPE 3. Selected indirect emissions (mtCO_{2e})													
Business Travel - Flight	3.0	6.5	5.3	2.4	5.4	4.5	4.1	1.1	5.8	2.0	9.4	13.5	63.1
Employees' Cars	34.6	24.2	17.7	14.2	46.5	49.3	47.2	44.8	44.1	47.5	49.9	49.8	469.8
Paper Consumption	4.0	4.0	4.1	4.1	4.1	4.0	0.2	0.2	0.2	0.2	0.2	0.2	25.5
Total Scope 3	41.6	34.8	27.0	20.8	56.0	57.8	51.6	46.1	50.1	49.7	59.5	63.5	558.4
Monthly GHG emissions (mtCO _{2e})	336.3	291.5	315.9	267.0	371.5	334.2	406.9	426.8	390.7	375.6	355.7	341.6	4,213.7
Total GHG emissions emitted in 2023 from IPT Group (mtCO_{2e})													4,213.7

TOTAL GHG EMISSION AVOIDED IN 2023

IPT group generated electricity from renewable energy accounting for a total of **198.8** mtCO_{2e} avoided. Accounting for the total GHG emissions emitted from the production of power, IPT avoided emitting **17.4%** of GHG emissions.

Description	Jan-23	Feb-23	Mar-23	Apr-23	May-23	Jun-23	Jul-23	Aug-23	Sep-23	Oct-23	Nov-23	Dec-23	TOTAL
Avoided GHG Electricity	7.7	7.0	8.8	9.6	13.4	19.3	23.2	20.3	27.8	20.7	18.4	22.7	198.8
Avoided GHG Waste	0.4	0.5	0.4	0.6	0.8	1.5	0.8	1.4	33.0	1.7	3.0	5.0	49.1
Total avoided GHG (mtCO_{2e})													247.9

