



Calendar 2020



20|GREEN  
20|RESOLUTION

# IPT GROUP

## Calendar 2020



The **IPT 2020** calendar was inspired by our green practices which are now adopted at the office and have become a part of our organizational culture.

For the past 50 years, IPT partnered with the local community and worked closely with industry leaders in Lebanon and abroad to gain a wealth of experience and become a leader in the Lebanese market with a network of more than 200 service stations across the country.

As we grow, we make sure our journey is sustainable, embedding our values in every aspect of our daily operations. Therefore, we have been encouraging the efficient use of energy sources and striving to support communities to grow and prosper in adequate environments.

Trusting that all starts from within, we engaged our staff and created a "Green Team". This initiative works on implementing a green strategy that focuses on reducing energy use, reducing waste and making sustainable decisions.

Sharing our Eco-Friendly practices with our stakeholders is our choice and our invitation for you to join us in what we believe are small steps that will make a big impact in everyone's lives.

*Wishing you a Green year ahead*

ENGAGE  
YOUR TEAM



## LIST YOUR IDEAS

---

---

---

---

---

---

---

---

---

---

---

---

---



# CREATE A SUSTAINABILITY TEAM

JANUARY



# JANUARY

Beginning of The Year  
Wednesday 1

| SUN | MON | TUE | WED | THU | FRI | SAT |
|-----|-----|-----|-----|-----|-----|-----|
|     |     |     | 1   | 2   | 3   | 4   |
| 5   | 6   | 7   | 8   | 9   | 10  | 11  |
| 12  | 13  | 14  | 15  | 16  | 17  | 18  |
| 19  | 20  | 21  | 22  | 23  | 24  | 25  |
| 26  | 27  | 28  | 29  | 30  | 31  |     |



CREATE A  
SUSTAINABILITY TEAM



## FEBRUARY

| S  | M  | T  | W  | T  | F  | S  |
|----|----|----|----|----|----|----|
|    |    |    |    |    |    | 1  |
| 2  | 3  | 4  | 5  | 6  | 7  | 8  |
| 9  | 10 | 11 | 12 | 13 | 14 | 15 |
| 16 | 17 | 18 | 19 | 20 | 21 | 22 |
| 23 | 24 | 25 | 26 | 27 | 28 | 29 |

# SET SPECIFIC GOALS FOR YOUR OFFICE SUSTAINABLE INITIATIVES



FEBRUARY



# FEBRUARY

Valentine's Day  
Friday 14

| SUN | MON | TUE | WED | THU | FRI       | SAT |
|-----|-----|-----|-----|-----|-----------|-----|
|     |     |     |     |     |           | 1   |
| 2   | 3   | 4   | 5   | 6   | 7         | 8   |
| 9   | 10  | 11  | 12  | 13  | <b>14</b> | 15  |
| 16  | 17  | 18  | 19  | 20  | 21        | 22  |
| 23  | 24  | 25  | 26  | 27  | 28        | 29  |



SET SPECIFIC GOALS FOR YOUR  
OFFICE SUSTAINABLE INITIATIVES



## MARCH

| S  | M  | T  | W  | T  | F  | S  |
|----|----|----|----|----|----|----|
| 1  | 2  | 3  | 4  | 5  | 6  | 7  |
| 8  | 9  | 10 | 11 | 12 | 13 | 14 |
| 15 | 16 | 17 | 18 | 19 | 20 | 21 |
| 22 | 23 | 24 | 25 | 26 | 27 | 28 |
| 29 | 30 | 31 |    |    |    |    |



## WHAT HAVE YOU ACHIEVED SO FAR?

---

---

---

---

---

---

---

---

---

---

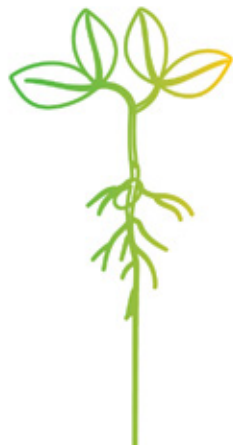
---

---

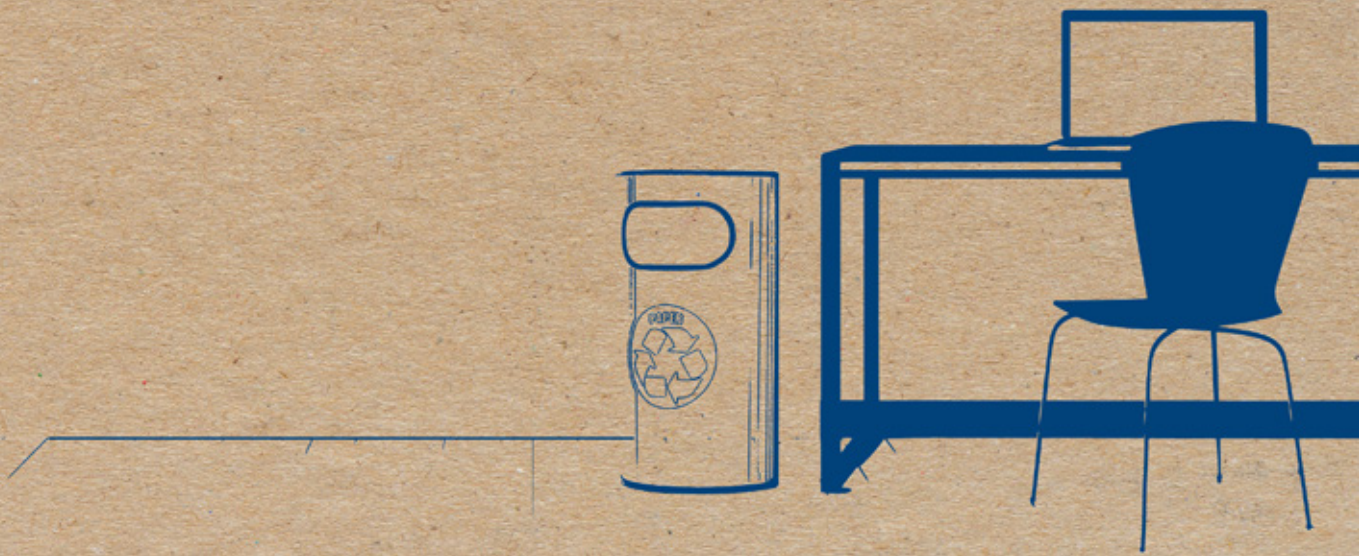
---

---

---



**REDUCE  
WASTE**



# LIST YOUR IDEAS

---

---

---

---

---

---

---

---

---

---

---

---



# SET UP RECYCLING BINS AROUND THE OFFICE



MARCH



# MARCH

Teacher's Day  
Monday 9

Mother's Day  
Saturday 21

| SUN | MON      | TUE | WED | THU | FRI | SAT       |
|-----|----------|-----|-----|-----|-----|-----------|
| 1   | 2        | 3   | 4   | 5   | 6   | 7         |
| 8   | <b>9</b> | 10  | 11  | 12  | 13  | 14        |
| 15  | 16       | 17  | 18  | 19  | 20  | <b>21</b> |
| 22  | 23       | 24  | 25  | 26  | 27  | 28        |
| 29  | 30       | 31  |     |     |     |           |



SET UP RECYCLING BINS  
AROUND THE OFFICE



## APRIL

| S  | M  | T  | W  | T  | F  | S  |
|----|----|----|----|----|----|----|
|    |    |    | 1  | 2  | 3  | 4  |
| 5  | 6  | 7  | 8  | 9  | 10 | 11 |
| 12 | 13 | 14 | 15 | 16 | 17 | 18 |
| 19 | 20 | 21 | 22 | 23 | 24 | 25 |
| 26 | 27 | 28 | 29 | 30 |    |    |

# USE LESS DISPOSABLE DISHWARE

APRIL



# APRIL

April Fool's Day  
Wednesday 1

Earth Day  
Wednesday 22

| SUN | MON | TUE | WED | THU | FRI | SAT |
|-----|-----|-----|-----|-----|-----|-----|
|     |     |     | 1   | 2   | 3   | 4   |
| 5   | 6   | 7   | 8   | 9   | 10  | 11  |
| 12  | 13  | 14  | 15  | 16  | 17  | 18  |
| 19  | 20  | 21  | 22  | 23  | 24  | 25  |
| 26  | 27  | 28  | 29  | 30  |     |     |



USE LESS  
DISPOSABLE DISHWARE



MAY

| S  | M  | T  | W  | T  | F  | S  |
|----|----|----|----|----|----|----|
|    |    |    |    |    | 1  | 2  |
| 3  | 4  | 5  | 6  | 7  | 8  | 9  |
| 10 | 11 | 12 | 13 | 14 | 15 | 16 |
| 17 | 18 | 19 | 20 | 21 | 22 | 23 |
| 24 | 25 | 26 | 27 | 28 | 29 | 30 |
| 31 |    |    |    |    |    |    |

# PROMOTE A PAPERLESS WORKSPACE



MAY





# MAY

Labor Day  
Friday 1

World Red Cross Day  
Friday 8

| SUN | MON | TUE | WED | THU | FRI | SAT |
|-----|-----|-----|-----|-----|-----|-----|
|     |     |     |     |     | 1   | 2   |
| 3   | 4   | 5   | 6   | 7   | 8   | 9   |
| 10  | 11  | 12  | 13  | 14  | 15  | 16  |
| 17  | 18  | 19  | 20  | 21  | 22  | 23  |
| 24  | 25  | 26  | 27  | 28  | 29  | 30  |
| 31  |     |     |     |     |     |     |



PROMOTE A PAPERLESS  
WORKSPACE



## JUNE

| S  | M  | T  | W  | T  | F  | S  |
|----|----|----|----|----|----|----|
|    | 1  | 2  | 3  | 4  | 5  | 6  |
| 7  | 8  | 9  | 10 | 11 | 12 | 13 |
| 14 | 15 | 16 | 17 | 18 | 19 | 20 |
| 21 | 22 | 23 | 24 | 25 | 26 | 27 |
| 28 | 29 | 30 |    |    |    |    |

# USE CLOTH TOWELS INSTEAD OF PAPER TOWELS

JUNE



# JUNE

World Environment Day  
Friday 5

Father's Day  
Sunday 21

| SUN       | MON | TUE | WED | THU | FRI      | SAT |
|-----------|-----|-----|-----|-----|----------|-----|
|           | 1   | 2   | 3   | 4   | <b>5</b> | 6   |
| 7         | 8   | 9   | 10  | 11  | 12       | 13  |
| 14        | 15  | 16  | 17  | 18  | 19       | 20  |
| <b>21</b> | 22  | 23  | 24  | 25  | 26       | 27  |
| 28        | 29  | 30  |     |     |          |     |



USE CLOTH TOWELS INSTEAD  
OF PAPER TOWELS



## JULY

| S  | M  | T  | W  | T  | F  | S  |
|----|----|----|----|----|----|----|
|    |    |    | 1  | 2  | 3  | 4  |
| 5  | 6  | 7  | 8  | 9  | 10 | 11 |
| 12 | 13 | 14 | 15 | 16 | 17 | 18 |
| 19 | 20 | 21 | 22 | 23 | 24 | 25 |
| 26 | 27 | 28 | 29 | 30 | 31 |    |

## WHAT HAVE YOU ACHIEVED SO FAR?

---

---

---

---

---

---

---

---

---

---

---

---

---



**CHOOSE  
SUSTAINABLE**



## LIST YOUR IDEAS

---

---

---

---

---

---

---

---

---

---



# MAKE SUSTAINABLE PURCHASING DECISIONS



JULY



# JULY

World Population Day  
Saturday 11

World Nature Conservation Day  
Tuesday 28

| SUN | MON | TUE       | WED | THU | FRI | SAT       |
|-----|-----|-----------|-----|-----|-----|-----------|
|     |     |           | 1   | 2   | 3   | 4         |
| 5   | 6   | 7         | 8   | 9   | 10  | <b>11</b> |
| 12  | 13  | 14        | 15  | 16  | 17  | 18        |
| 19  | 20  | 21        | 22  | 23  | 24  | 25        |
| 26  | 27  | <b>28</b> | 29  | 30  | 31  |           |



**MAKE SUSTAINABLE  
PURCHASING DECISIONS**



AUGUST

| S  | M  | T  | W  | T  | F  | S  |
|----|----|----|----|----|----|----|
|    |    |    |    |    |    | 1  |
| 2  | 3  | 4  | 5  | 6  | 7  | 8  |
| 9  | 10 | 11 | 12 | 13 | 14 | 15 |
| 16 | 17 | 18 | 19 | 20 | 21 | 22 |
| 23 | 24 | 25 | 26 | 27 | 28 | 29 |
| 30 | 31 |    |    |    |    |    |



# USE NON-TOXIC AND BIODEGRADABLE CLEANING PRODUCTS



AUGUST



# AUGUST

Lebanese Army Day  
Saturday 1

World Biodiesel Day  
Monday 10

| SUN | MON       | TUE | WED | THU | FRI | SAT      |
|-----|-----------|-----|-----|-----|-----|----------|
|     |           |     |     |     |     | <b>1</b> |
| 2   | 3         | 4   | 5   | 6   | 7   | 8        |
| 9   | <b>10</b> | 11  | 12  | 13  | 14  | 15       |
| 16  | 17        | 18  | 19  | 20  | 21  | 22       |
| 23  | 24        | 25  | 26  | 27  | 28  | 29       |
| 30  | 31        |     |     |     |     |          |



USE NON-TOXIC AND BIODEGRADABLE  
CLEANING PRODUCTS

## SEPTEMBER

| S  | M  | T  | W  | T  | F  | S  |
|----|----|----|----|----|----|----|
|    |    | 1  | 2  | 3  | 4  | 5  |
| 6  | 7  | 8  | 9  | 10 | 11 | 12 |
| 13 | 14 | 15 | 16 | 17 | 18 | 19 |
| 20 | 21 | 22 | 23 | 24 | 25 | 26 |
| 27 | 28 | 29 | 30 |    |    |    |

# INVEST IN INDOOR PLANTS



SEPTEMBER



# SEPTEMBER

World Cleanup Day  
Saturday 19

World Car-Free Day  
Tuesday 22

| SUN | MON | TUE       | WED | THU | FRI | SAT       |
|-----|-----|-----------|-----|-----|-----|-----------|
|     |     | 1         | 2   | 3   | 4   | 5         |
| 6   | 7   | 8         | 9   | 10  | 11  | 12        |
| 13  | 14  | 15        | 16  | 17  | 18  | <b>19</b> |
| 20  | 21  | <b>22</b> | 23  | 24  | 25  | 26        |
| 27  | 28  | 29        | 30  |     |     |           |



INVEST IN  
INDOOR PLANTS



## OCTOBER

| S  | M  | T  | W  | T  | F  | S  |
|----|----|----|----|----|----|----|
|    |    |    |    | 1  | 2  | 3  |
| 4  | 5  | 6  | 7  | 8  | 9  | 10 |
| 11 | 12 | 13 | 14 | 15 | 16 | 17 |
| 18 | 19 | 20 | 21 | 22 | 23 | 24 |
| 25 | 26 | 27 | 28 | 29 | 30 | 31 |

## WHAT HAVE YOU ACHIEVED SO FAR?

---

---

---

---

---

---

---

---

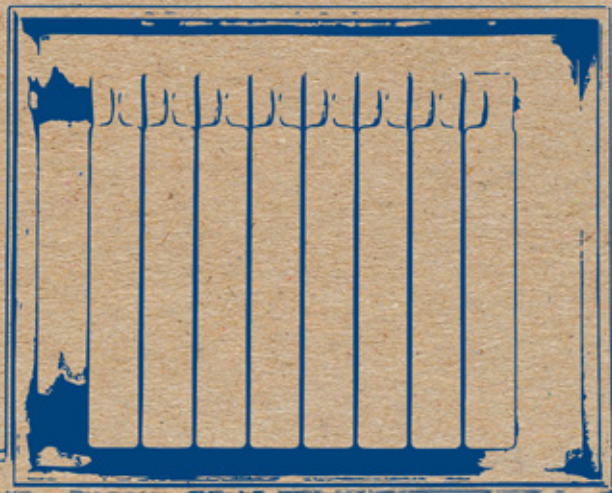
---

---

---



REDUCE  
ENERGY



# LIST YOUR IDEAS

---

---

---

---

---

---

---

---

---

---



**TURN OFF  
ELECTRONICS,  
LIGHTING, AND HEAT  
WHEN NOT IN USE**



OCTOBER





# OCTOBER

Energy Efficiency Day  
Wednesday 7

International Day of Climate Action  
Saturday 24

| SUN | MON | TUE | WED      | THU | FRI | SAT       |
|-----|-----|-----|----------|-----|-----|-----------|
|     |     |     |          | 1   | 2   | 3         |
| 4   | 5   | 6   | <b>7</b> | 8   | 9   | 10        |
| 11  | 12  | 13  | 14       | 15  | 16  | 17        |
| 18  | 19  | 20  | 21       | 22  | 23  | <b>24</b> |
| 25  | 26  | 27  | 28       | 29  | 30  | 31        |



**TURN OFF ELECTRONICS, LIGHTING,  
AND HEAT WHEN NOT IN USE**



## NOVEMBER

| S  | M  | T  | W  | T  | F  | S  |
|----|----|----|----|----|----|----|
| 1  | 2  | 3  | 4  | 5  | 6  | 7  |
| 8  | 9  | 10 | 11 | 12 | 13 | 14 |
| 15 | 16 | 17 | 18 | 19 | 20 | 21 |
| 22 | 23 | 24 | 25 | 26 | 27 | 28 |
| 29 | 30 |    |    |    |    |    |

# MAXIMIZE NATURAL LIGHT

NOVEMBER



# NOVEMBER

Lebanese Independence Day  
Sunday 22

| SUN       | MON | TUE | WED | THU | FRI | SAT |
|-----------|-----|-----|-----|-----|-----|-----|
| 1         | 2   | 3   | 4   | 5   | 6   | 7   |
| 8         | 9   | 10  | 11  | 12  | 13  | 14  |
| 15        | 16  | 17  | 18  | 19  | 20  | 21  |
| <b>22</b> | 23  | 24  | 25  | 26  | 27  | 28  |
| 29        | 30  |     |     |     |     |     |



MAXIMIZE  
NATURAL LIGHT



## DECEMBER

| S  | M  | T  | W  | T  | F  | S  |
|----|----|----|----|----|----|----|
|    |    | 1  | 2  | 3  | 4  | 5  |
| 6  | 7  | 8  | 9  | 10 | 11 | 12 |
| 13 | 14 | 15 | 16 | 17 | 18 | 19 |
| 20 | 21 | 22 | 23 | 24 | 25 | 26 |
| 27 | 28 | 29 | 30 | 31 |    |    |

# ENCOURAGE CARPOOLING



DECEMBER



# DECEMBER

World Pollution Prevention Day  
Wednesday 2

New Year's Eve  
Thursday 31

| SUN | MON | TUE | WED | THU | FRI | SAT |
|-----|-----|-----|-----|-----|-----|-----|
|     |     | 1   | 2   | 3   | 4   | 5   |
| 6   | 7   | 8   | 9   | 10  | 11  | 12  |
| 13  | 14  | 15  | 16  | 17  | 18  | 19  |
| 20  | 21  | 22  | 23  | 24  | 25  | 26  |
| 27  | 28  | 29  | 30  | 31  |     |     |



ENCOURAGE  
CARPOOLING



JANUARY

| S  | M  | T  | W  | T  | F  | S  |
|----|----|----|----|----|----|----|
|    |    |    |    |    | 1  | 2  |
| 3  | 4  | 5  | 6  | 7  | 8  | 9  |
| 10 | 11 | 12 | 13 | 14 | 15 | 16 |
| 17 | 18 | 19 | 20 | 21 | 22 | 23 |
| 24 | 25 | 26 | 27 | 28 | 29 | 30 |
| 31 |    |    |    |    |    |    |



## Lebanese public holidays in 2020

|                                 |        |                               |          |
|---------------------------------|--------|-------------------------------|----------|
| New Year's Day                  | JAN 1  | Eid Al Fitr                   | MAY 24*  |
| Armenian Orthodox Christmas Day | JAN 6  | Resistance and Liberation Day | MAY 25   |
| St. Maroun Day                  | FEB 9  | Eid Al Adha                   | JULY 31* |
| Feast of the Annunciation       | MAR 25 | Assumption of Mary            | AUG 15   |
| Good Friday (Western Church)    | APR 10 | Hijri New Year                | AUG 20*  |
| Easter Monday (Western Church)  | APR 13 | Ashura                        | AUG 29*  |
| Good Friday (Eastern Church)    | APR 17 | Prophet Muhammad's Birthday   | OCT 29*  |
| Easter Monday (Eastern Church)  | APR 20 | Independence Day              | NOV 22   |
| Labor Day                       | MAY 1  | Christmas Day                 | DEC 25   |

\*Tentative date, may vary according to the lunar cycle.

# 2021

## JANUARY

| S  | M  | T  | W  | T  | F  | S  |
|----|----|----|----|----|----|----|
|    |    |    |    |    | 1  | 2  |
| 3  | 4  | 5  | 6  | 7  | 8  | 9  |
| 10 | 11 | 12 | 13 | 14 | 15 | 16 |
| 17 | 18 | 19 | 20 | 21 | 22 | 23 |
| 24 | 25 | 26 | 27 | 28 | 29 | 30 |
| 31 |    |    |    |    |    |    |

## MAY

| S  | M  | T  | W  | T  | F  | S  |
|----|----|----|----|----|----|----|
|    |    |    |    |    |    | 1  |
| 2  | 3  | 4  | 5  | 6  | 7  | 8  |
| 9  | 10 | 11 | 12 | 13 | 14 | 15 |
| 16 | 17 | 18 | 19 | 20 | 21 | 22 |
| 23 | 24 | 25 | 26 | 27 | 28 | 29 |
| 30 | 31 |    |    |    |    |    |

## SEPTEMBER

| S  | M  | T  | W  | T  | F  | S  |
|----|----|----|----|----|----|----|
|    |    |    | 1  | 2  | 3  | 4  |
| 5  | 6  | 7  | 8  | 9  | 10 | 11 |
| 12 | 13 | 14 | 15 | 16 | 17 | 18 |
| 19 | 20 | 21 | 22 | 23 | 24 | 25 |
| 26 | 27 | 28 | 29 | 30 |    |    |

## FEBRUARY

| S  | M  | T  | W  | T  | F  | S  |
|----|----|----|----|----|----|----|
|    | 1  | 2  | 3  | 4  | 5  | 6  |
| 7  | 8  | 9  | 10 | 11 | 12 | 13 |
| 14 | 15 | 16 | 17 | 18 | 19 | 20 |
| 21 | 22 | 23 | 24 | 25 | 26 | 27 |
| 28 |    |    |    |    |    |    |

## JUNE

| S  | M  | T  | W  | T  | F  | S  |
|----|----|----|----|----|----|----|
|    |    | 1  | 2  | 3  | 4  | 5  |
| 6  | 7  | 8  | 9  | 10 | 11 | 12 |
| 13 | 14 | 15 | 16 | 17 | 18 | 19 |
| 20 | 21 | 22 | 23 | 24 | 25 | 26 |
| 27 | 28 | 29 | 30 |    |    |    |

## OCTOBER

| S  | M  | T  | W  | T  | F  | S  |
|----|----|----|----|----|----|----|
|    |    |    |    |    | 1  | 2  |
| 3  | 4  | 5  | 6  | 7  | 8  | 9  |
| 10 | 11 | 12 | 13 | 14 | 15 | 16 |
| 17 | 18 | 19 | 20 | 21 | 22 | 23 |
| 24 | 25 | 26 | 27 | 28 | 29 | 30 |
| 31 |    |    |    |    |    |    |

## MARCH

| S  | M  | T  | W  | T  | F  | S  |
|----|----|----|----|----|----|----|
|    | 1  | 2  | 3  | 4  | 5  | 6  |
| 7  | 8  | 9  | 10 | 11 | 12 | 13 |
| 14 | 15 | 16 | 17 | 18 | 19 | 20 |
| 21 | 22 | 23 | 24 | 25 | 26 | 27 |
| 28 | 29 | 30 | 31 |    |    |    |

## JULY

| S  | M  | T  | W  | T  | F  | S  |   |
|----|----|----|----|----|----|----|---|
|    |    |    |    |    | 1  | 2  | 3 |
| 4  | 5  | 6  | 7  | 8  | 9  | 10 |   |
| 11 | 12 | 13 | 14 | 15 | 16 | 17 |   |
| 18 | 19 | 20 | 21 | 22 | 23 | 24 |   |
| 25 | 26 | 27 | 28 | 29 | 30 | 31 |   |

## NOVEMBER

| S  | M  | T  | W  | T  | F  | S  |
|----|----|----|----|----|----|----|
|    | 1  | 2  | 3  | 4  | 5  | 6  |
| 7  | 8  | 9  | 10 | 11 | 12 | 13 |
| 14 | 15 | 16 | 17 | 18 | 19 | 20 |
| 21 | 22 | 23 | 24 | 25 | 26 | 27 |
| 28 | 29 | 30 |    |    |    |    |

## APRIL

| S  | M  | T  | W  | T  | F  | S  |
|----|----|----|----|----|----|----|
|    |    |    |    | 1  | 2  | 3  |
| 4  | 5  | 6  | 7  | 8  | 9  | 10 |
| 11 | 12 | 13 | 14 | 15 | 16 | 17 |
| 18 | 19 | 20 | 21 | 22 | 23 | 24 |
| 25 | 26 | 27 | 28 | 29 | 30 |    |

## AUGUST

| S  | M  | T  | W  | T  | F  | S  |
|----|----|----|----|----|----|----|
| 1  | 2  | 3  | 4  | 5  | 6  | 7  |
| 8  | 9  | 10 | 11 | 12 | 13 | 14 |
| 15 | 16 | 17 | 18 | 19 | 20 | 21 |
| 22 | 23 | 24 | 25 | 26 | 27 | 28 |
| 29 | 30 | 31 |    |    |    |    |

## DECEMBER

| S  | M  | T  | W  | T  | F  | S  |
|----|----|----|----|----|----|----|
|    |    |    | 1  | 2  | 3  | 4  |
| 5  | 6  | 7  | 8  | 9  | 10 | 11 |
| 12 | 13 | 14 | 15 | 16 | 17 | 18 |
| 19 | 20 | 21 | 22 | 23 | 24 | 25 |
| 26 | 27 | 28 | 29 | 30 | 31 |    |



IPT Headquarters, Amchit Highway  
P.O. Box 71 Jbeil - Lebanon  
+961 9 624 111/2/3  
info@iptgroup.com.lb  
iptgroup.com.lb

