

Reference report

Oil & Gas

Fuel Stations Monitoring System

Fuel Stations Monitoring System

In partnership with Siemens, AutomatiX provided a complete solution for the monitoring of the fuel supply and distribution. The system is based on a state-of-the-art supervisory platform with integrated intelligence to handle the entire distribution network over hundreds of square kilometers.

The supervisory system, based on SIMATIC WinCC Open Architecture (WinCC OA) covers the storage tanks, level, distribution, baths, fleets management system, remote monitoring of the dispensers tanks, activities, consumption in addition to the remote CCTV functionality.

The complete system is embedded with GIS (Geographical Information System) functionality, controlled from either a central control room or remotely through internet.

Using the market leading station automation, smart telemetry units are adopted from Siemens with virtual unlimited scalability in terms of number of points and geographical distribution.

End user

IPT, Lebanon

As one of the leading oil and gas companies in Lebanon, IPT is specialized in the import and storage of petroleum products including gasoline, gasoil, diesel oil, LPG, and lubricants. They also offer reliable distribution to gas stations, factories, and homes. IPT boasts a network of 30 fully owned gas stations that are managed by the company and has a chain of more than 140 franchised gas stations outside the firm's owned-network.

System integrator

AutomatiX, Lebanon

AutomatiX is WinCC OA Solution Partner and an engineering integration company, providing innovative solutions in the field of power and automation.

The company is headquartered in Beirut-Lebanon, and its operations cover the MENA region including Iraq, the GCC mainly in the Kingdom of Saudi Arabia and Qatar, the African continent specially Egypt, Republic of Congo, Guinea.

Realization

2014 - 2015

Reference report Oil & Gas

Fuel Stations Monitoring System

Technical data

Fuel Stations Automation:

An average of 250 data points per station, with 30 stations distributed over the Lebanese territory.

Fuel Level, Water Level, Volumetric Temperature Correction, Fuel Dispenser Control, Price Sign, Lighting Control, Energy Management, Cost Centers, Truck Washing and more...

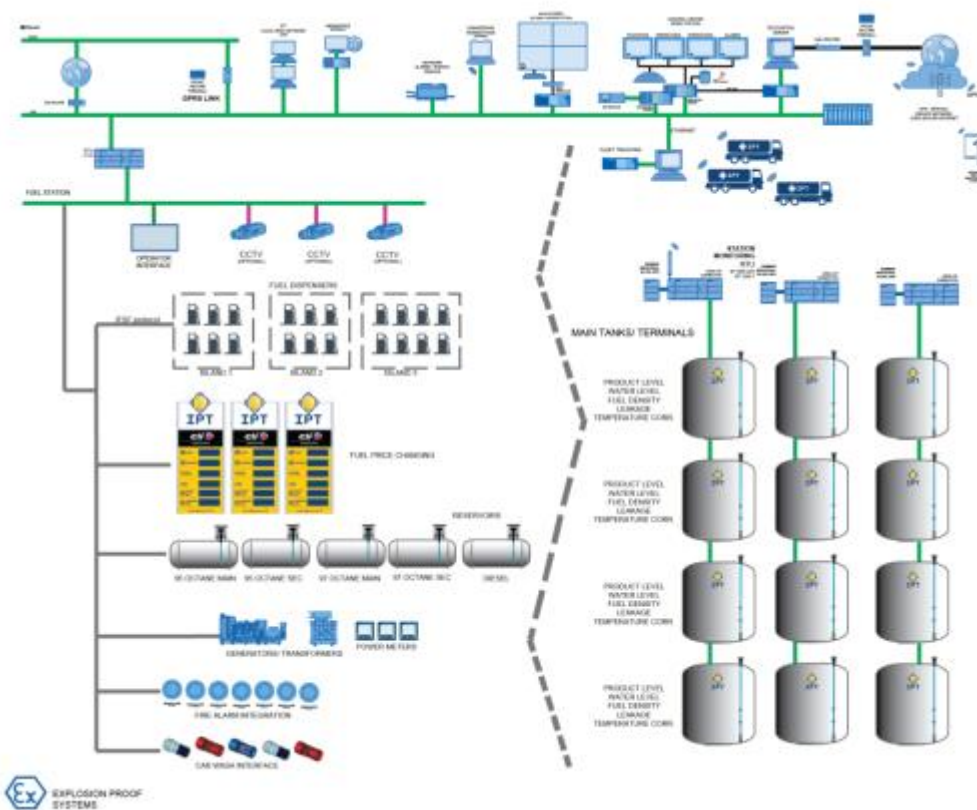
Terminal Automation:

Vessel Unloading, Truck Loading, Fuel Level, Water Level, Density & Temperature Correction

Cost Efficient Solution

SIEMENS S7-1200 driving several Communication Protocols & Networks

(IFSF, Industrial Ethernet, Modbus RTU, PtP, TCP/IP, VPN, GPRS)



Reference report Oil & Gas

Fuel Stations Monitoring System

Special features / options

- Remote connectivity through VPN and GPRS connections
- Excel Reporting
- Scheduler
- GIS Viewer
- WinCC OA Operator workstation for visualization on iPhone/iPad
- Ultralight Client

Advantages / Benefits

- Quality control 24/7
- Waste control and rubbery minimization
- Open system able to accommodate third party elements such as IFSF dispensers, washing machines, fleet tracking
- Able to expand to cover IPT sub dealer covering 100 stations across Lebanon
- Entire Supply Chain Monitoring & Management
- Monitor fuel sold at each pump
- Versatile Reporting & Market Intelligence with WinCC OA
- Reduce cost and Facilitate cost count
- Allow the collection of essential data and generation of reports for management purposes
- Ease of operation and maintenance
- Embedded GIS for Station Monitoring and Fleet Tracking

The end user is quite satisfied, especially with the open structure, which enables to accommodate third party systems.

SIEMENS

Reference report Oil & Gas

Fuel Stations Monitoring System

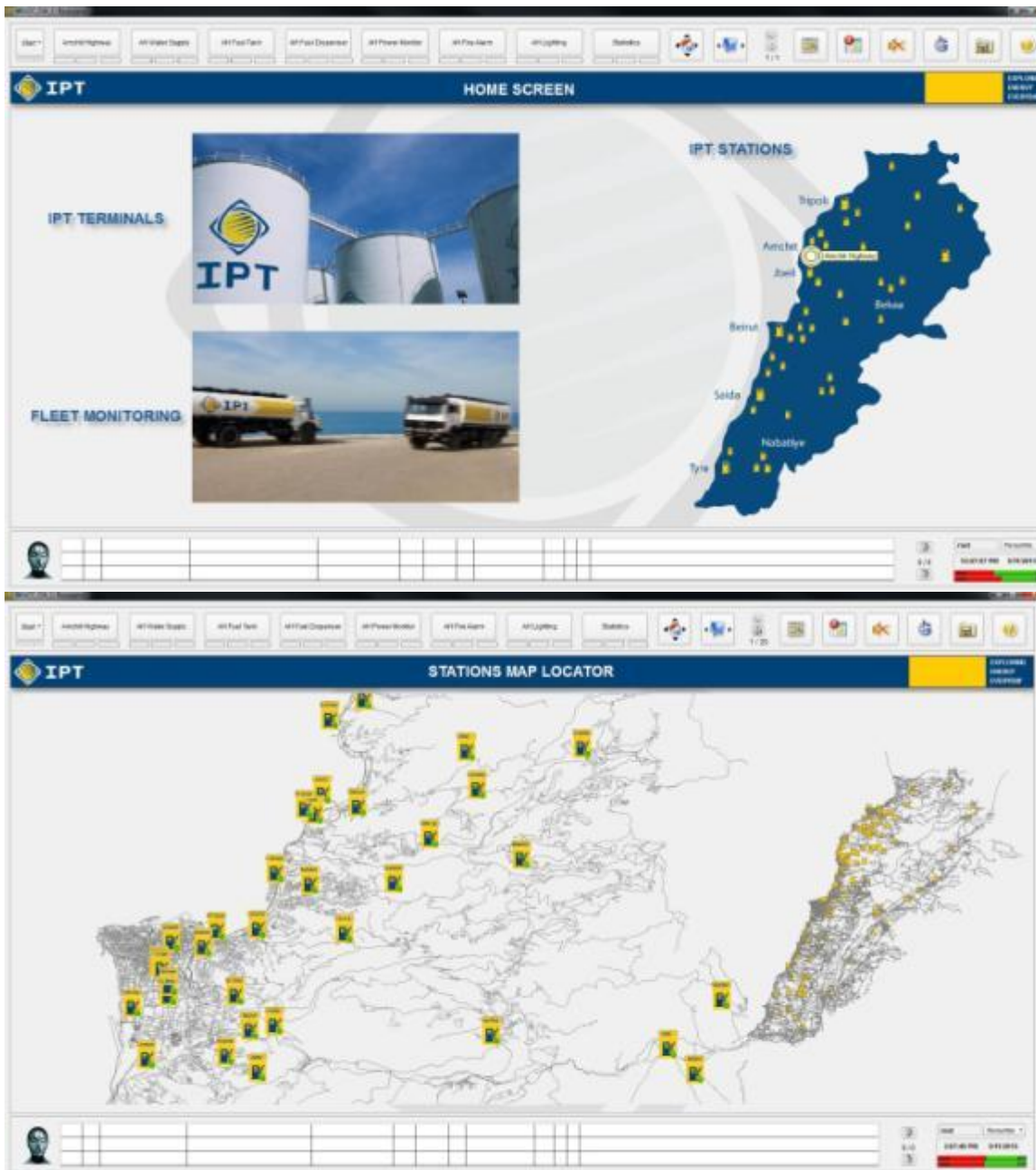
Pictures / Panels

AutomatiX
Excellence Through Innovation



Reference report Oil & Gas

Fuel Stations Monitoring System



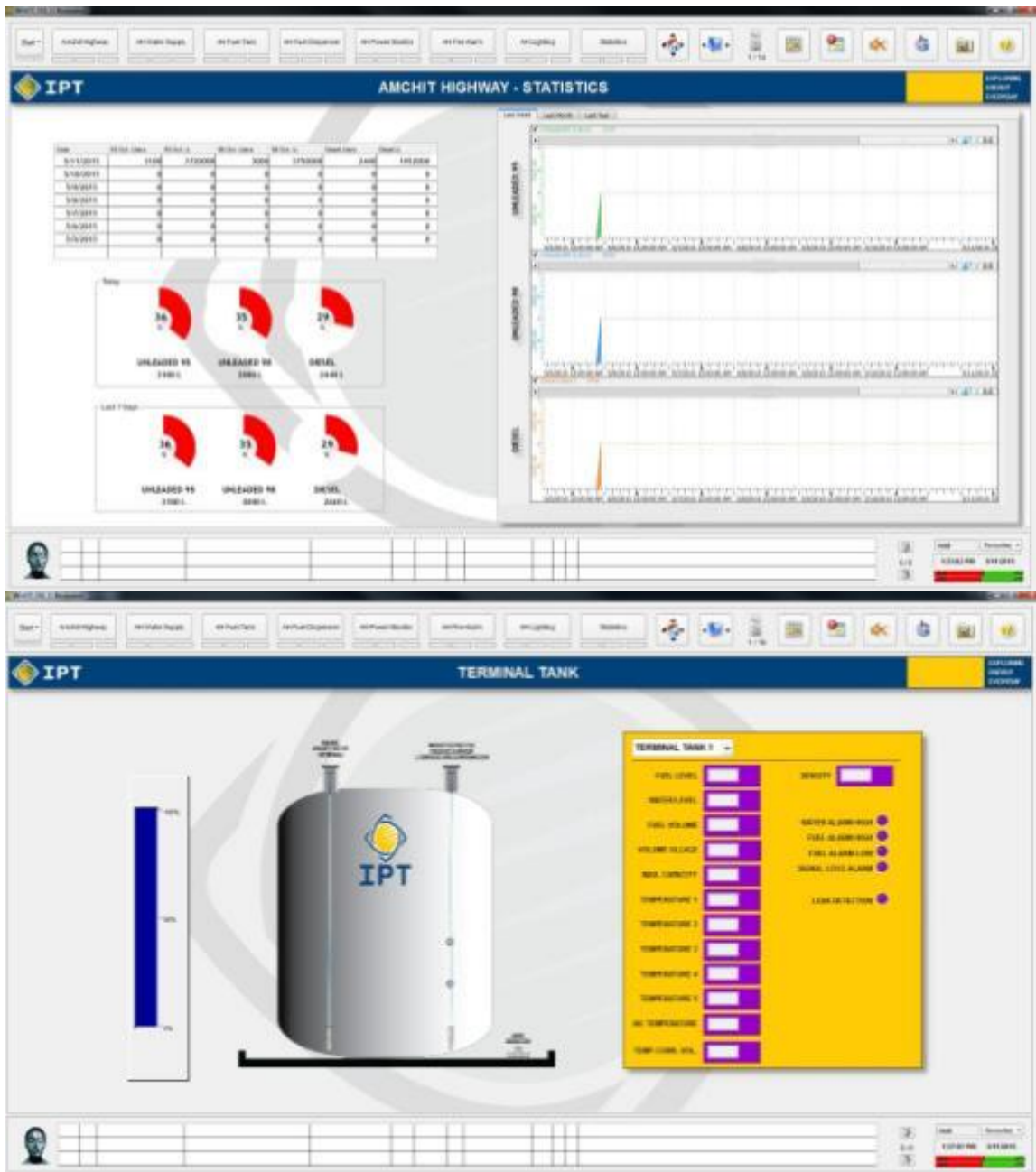
Reference report Oil & Gas

Fuel Stations Monitoring System



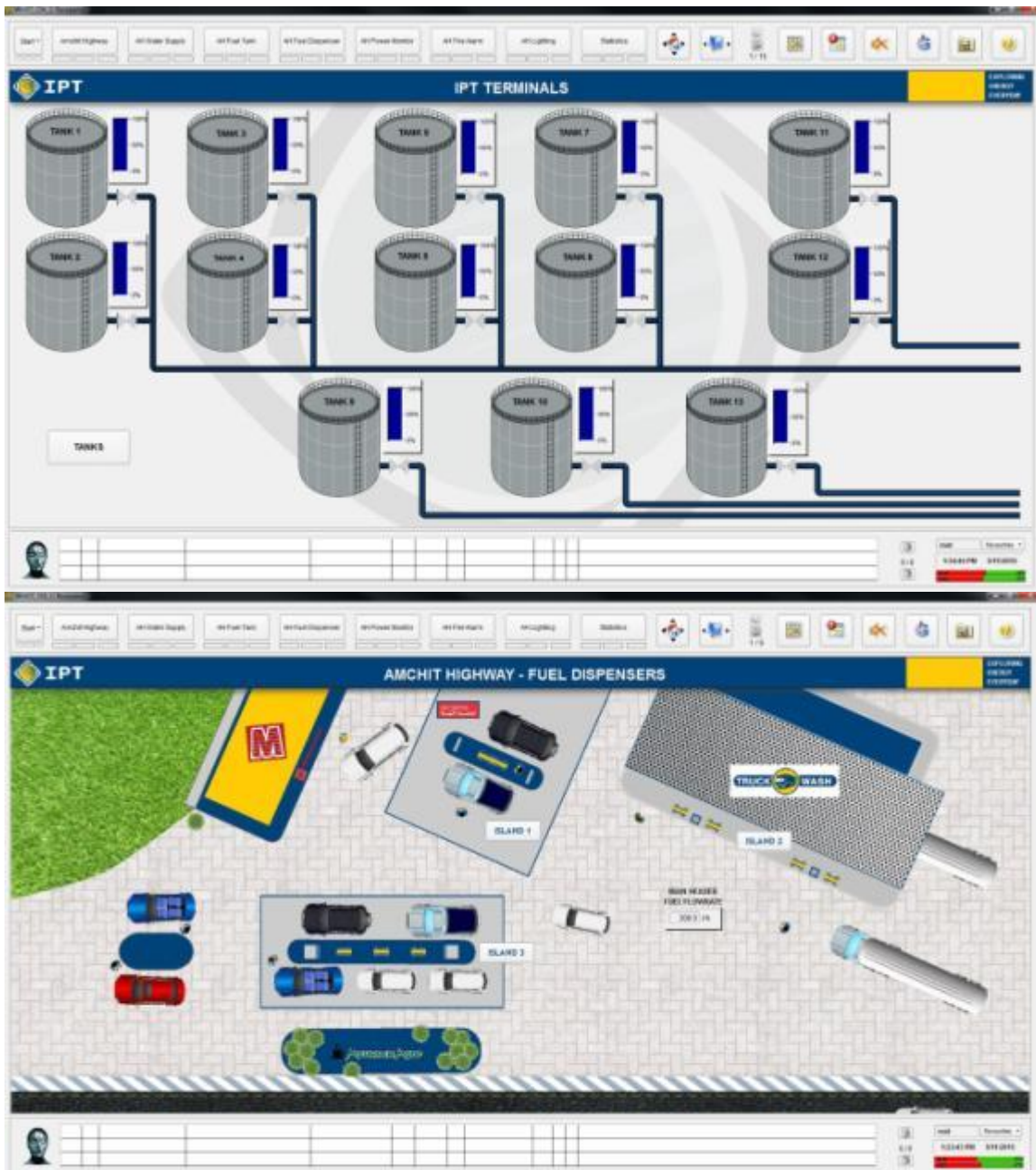
Reference report Oil & Gas

Fuel Stations Monitoring System



Reference report Oil & Gas

Fuel Stations Monitoring System



Reference report Oil & Gas

Fuel Stations Monitoring System



Reference report Oil & Gas

Fuel Stations Monitoring System

